

Product Datasheet

AVerVision CP135

Interactive Visualizer

As Real as It Gets

- High quality 3.2-megapixel CMOS camera sensor
- Display clear image with HD 720p output resolution
- Explore details with powerful 16X total zoom
- Easy-to-use control panel and shuttle wheel
- All-new versatile AVer+ software



Product Specifications & Features

Image / Video	
Image Sensor	1/2" CMOS Color Image Sensor
Total Pixels	3.2M Pixels
Output Resolution	HD 720p (1280 x 720)
Lens	F 3.0; fl = 9.6mm
Zoom	16X Total Zoom (2X AVerZoom™ + 8X Digital Zoom)
Frame Rate	24fps (Max.)
Focus	Manual
Shooting Area	330 x 248mm (Max.)
Functions	
Image Rotation	Camera Head 0° / 90° / -90°
Internal Storage	Built-in Memory (Max: 80; up to 3M each)
On-Screen Display (OSD)	Provided
Image Effects	Color / B&W / Negative / Mirror / Reverse / Freeze
Image Adjust. (White Balance / Exposure / Night View)	Auto / Manual
AVerPresenter	Provided (AVerBox & AVerVisor)
Split Screen	Provided (Vertical & Horizontal)
Picture-in-Picture	Provided
Display Mode	Text / Graphics / High Frame
Capture Mode	Single / Continuous
User Profiles	Up to 3
Timer	Provided
Flicker Filter Control	Provided (2 Levels)
Remote Control	Provided

Patent No.: Japan 3122844, Taiwan 1276904

© 2008-2010 AVerMedia INFORMATION, Inc.

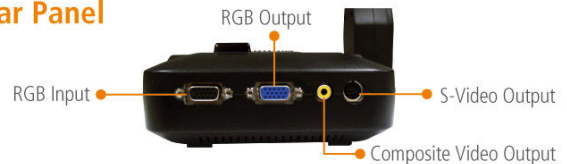
All rights reserved. No part of this document may be reproduced, transmitted, transcribed, stored in a retrieval system, transmitted in any form, or translated into any language by any means (electronically, mechanically, photocopied, recorded, etc.) without the prior written permission of AVerMedia. Information in this document is subject to change without notice. The information contained herein is for informational purposes only and shall not be considered legally binding. "AVerVision" and "AVer" are trademarks (or registered trademarks) of AVerMedia Information, Inc. Other trademarks used herein for description purposes only belong to each of their respective companies. Version 1.31

Product Datasheet

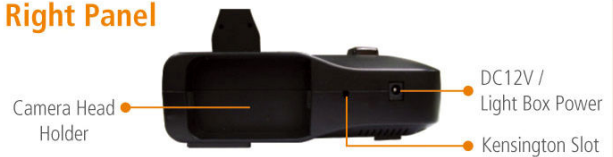
Connectivity	
RGB Input	Provided (15-Pins D-Sub, Pass Through)
RGB Output	Provided (15-Pins D-Sub, Pass Through)
S-Video & Composite Video Output	Provided (NTSC or PAL)
USB 2.0 Port	Provided (PC Camera / Built-in Image Download)
Lighting	
Light Source	Embedded LED Lamp
Others	
Dimension	Operating: 480mm x 180mm x 504mm Folded: 340mm x 230mm x 61mm
Net Weight	2.4kg (5.29lbs)
Power Consumption	20W (Max.)
Certifications	FCC, CE
Package Content	
AVerVision CP135 Unit	Remote Control with Batteries
AVer+ Software CD	User Manual CD
Power Adapter	Quick Guide
RGB Cable	Warranty Card
USB Cable	Anti-Glare Sheet
Panel	



Rear Panel



Right Panel



Left Panel



Patent No.: Japan 3122844, Taiwan 1276904

© 2008-2010 AVerMedia INFORMATION, Inc.

All rights reserved. No part of this document may be reproduced, transmitted, transcribed, stored in a retrieval system, transmitted in any form, or translated into any language by any means (electronically, mechanically, photocopied, recorded, etc.) without the prior written permission of AVerMedia. Information in this document is subject to change without notice. The information contained herein is for informational purposes only and shall not be considered legally binding. "AVerVision" and "AVer" are trademarks (or registered trademarks) of AVerMedia Information, Inc. Other trademarks used herein for description purposes only belong to each of their respective companies. Version 1.31

Product Datasheet

Optional Accessories



Carrying Bag



Security Bracket



Microscope Adapter



Light Box

All-New AVer+ Software

AVer+ software offers a brand new user interface that allows you to draw and make notes on top of images, record video and audio, set up a multiple-user network, and much more.

System Requirements

For PC

Windows XP

- Intel Pentium III 1 GHz or later x86 processor (Intel Core 2 Duo 1.66GHz recommended)
- 512 MB of RAM (1 GB recommended)
- 100 MB free hard disk space for basic installation (without content in Gallery)

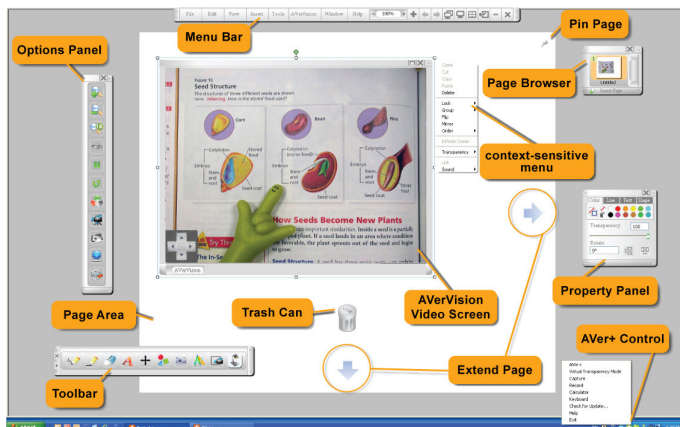
Windows Vista and 7

- Intel Core Duo 1.5 GHz or later x86 processor (Intel Core 2 Duo 1.66GHz recommended)
- 1 GB of RAM (2 GB recommended)
- 100 MB free hard disk space for basic installation (without content in Gallery)

For Mac

Mac OS X 10.4 and later

- 1GHz G4 processor or Intel Core Duo 1.83 GHz or later x86 processor (Intel Core 2 Duo 2.0 GHz recommended)
- 1 GB of RAM (2 GB recommended)
- 100 MB free hard disk space for basic installation (without content in Gallery)



Patent No.: Japan 3122844, Taiwan 1276904

© 2008-2010 AVerMedia INFORMATION, Inc.

All rights reserved. No part of this document may be reproduced, transmitted, transcribed, stored in a retrieval system, transmitted in any form, or translated into any language by any means (electronically, mechanically, photocopied, recorded, etc.) without the prior written permission of AVerMedia. Information in this document is subject to change without notice. The information contained herein is for informational purposes only and shall not be considered legally binding. "AVerVision" and "AVer" are trademarks (or registered trademarks) of AVerMedia Information, Inc. Other trademarks used herein for description purposes only belong to each of their respective companies. Version 1.31